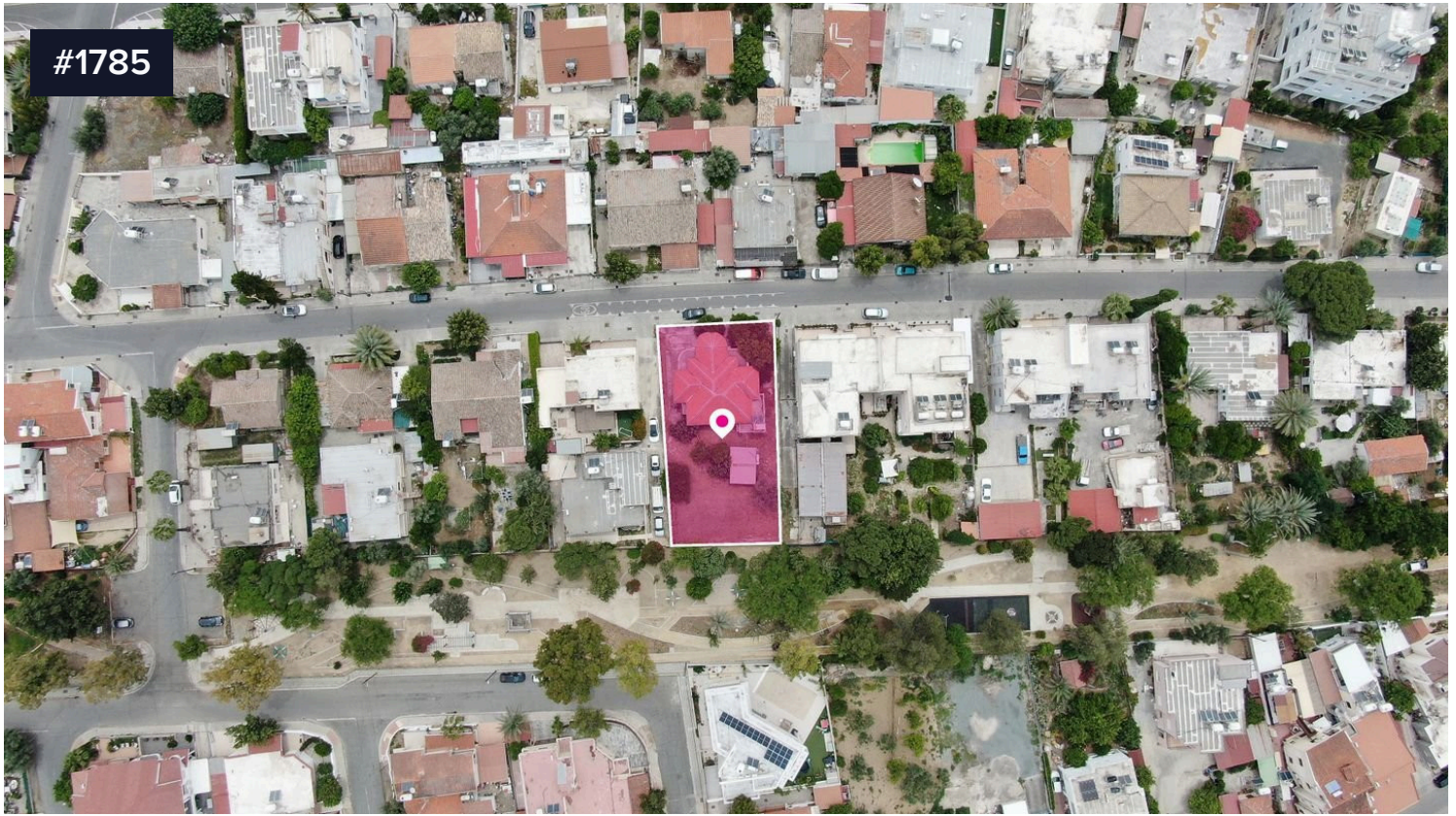


#1785



33% Share of a Plot In Kaimakli, Nicosia

€63,000 +VAT

 Kaimakli, Nicosia

A 33% share of a residential plot, extending to about 855 sq.m. in total.

The property is rectangularly shaped with a flat surface and access to the plot is via a registered road with a total frontage of approximately 22m.

Area

 285 m²



Any areas, energy class or descriptions are approximate and for guidance only. All information provided by TandyRealty should be independently verified and confirmed by interested party. No guarantee, warranty or representation of any kind is made regarding accuracy of any data mentioned herein.